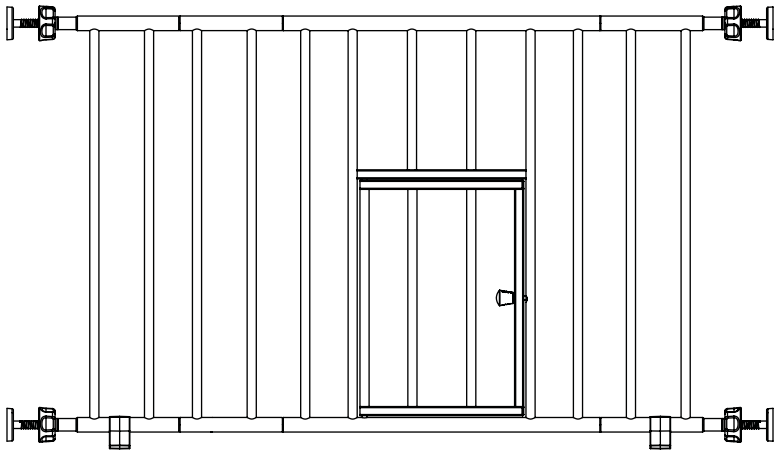


ENGLISH

CarlsonTM

Pet Products



Mini Step-Over Gate with small pet door

OWNER'S MANUAL MODELS: 0680 PW



**READ ALL INSTRUCTIONS BEFORE ASSEMBLY AND
USE OF GATE. KEEP INSTRUCTIONS FOR FUTURE USE.**

www.carlsonpetproducts.com

Carlson Pet Products, Inc.

3200 Corporate Center Drive, Suite 105

Burnsville, MN 55306, USA

Phone: 952-435-1084

Made in China

Assembly and Installation Instructions

Please read these instructions carefully installing your gate

NOTE: DO NOT USE THIS GATE FOR CHILDREN.

This gate can be used in openings from 18 inches to 31 inches.

ADDITIONAL EXTENSIONS SOLD SEPARATELY.



WARNING:

- NOT recommended for use with children.
- Install according to manufacturer's instructions.
- To prevent serious injury or death, securely install gate and use according to manufacturer's instructions.
- Children have died or been seriously injured when gates are not securely installed. ALWAYS install and use gate as directed using all required parts.
- Never stack gates on top of each other to form a taller barrier. This could result in serious injury or death.
- Intended for use with children between 6 and 24 months.
- STOP using when a child or pet can climb over or dislodge the gate.
- Use only with the locking/latching mechanism securely engaged.
- To prevent falls, NEVER use at top of stairs.
- NEVER use to keep child or pet away from pool.
- Always ensure the gate is resting against the floor before beginning installation.
- This is a Pet Gate, but when used with children, the small pet door must remain closed and securely latched.
- Strangulation hazard: pets can force themselves into very small openings; use this gate with pets whose heads will not fit into openings in the gate, between the gate and floor, or between the gate and wall.
- This product will not necessarily prevent all accidents. NEVER leave child or pet unattended.
- Check the gate regularly to see if all the hardware and mountings are tightened.
- Do not use if any components are missing or damaged.
- Adult assembly required.

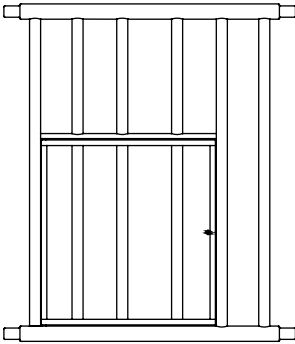
Contact Carlson for questions and replacement parts.

For questions about the use of your gate, call our customer care line at 952-435-1084.

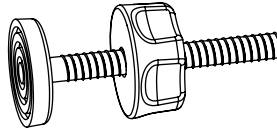
Carlson Pet Products, INC.
3200 Corporate Center Drive, Suite 105,
Burnsville, MN 55306, USA

Made in China.

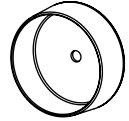
Check that you have these contents:



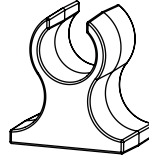
A.



B.



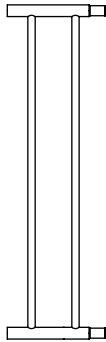
C.



D.



E.



F.

- A.** Main Gate Frame
- B.** 4 Threaded Spindle Rods with Adjustment Wheel
- C.** 4 Wall Cups
- D.** 2 Foot Stands
- E.** 4 1" Wall Mount Screws
- F.** 3 4" Extension

NOTE: When installing any gate at its maximum width use wall mounting cups to ensure stability and safety.

Assembling and Installing Your Gate

Step 1.

Attach all the provided panels together. Refer to Diagram A.

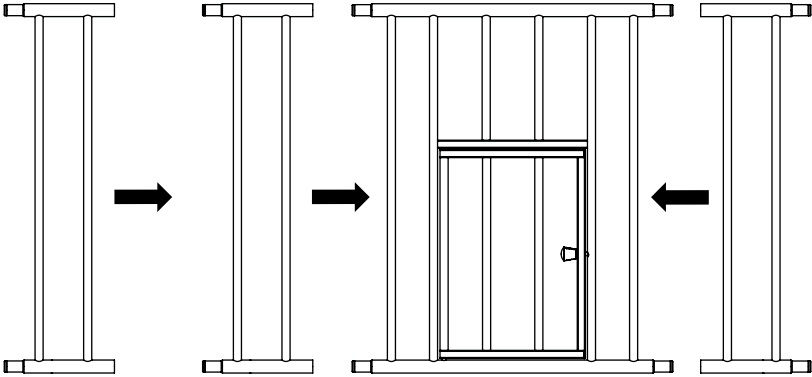


Diagram A

Step 2.

Locate the 4 threaded spindle rods. Rotate the adjustment wheels along the threading, eliminating the gap between the adjustment wheel and the rubber foot. Refer to Diagram B.

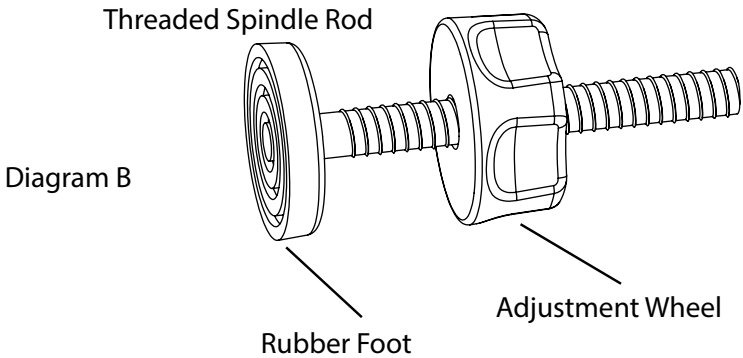
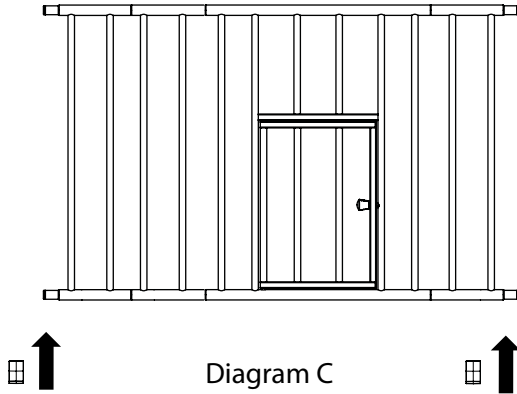


Diagram B

Step 3.

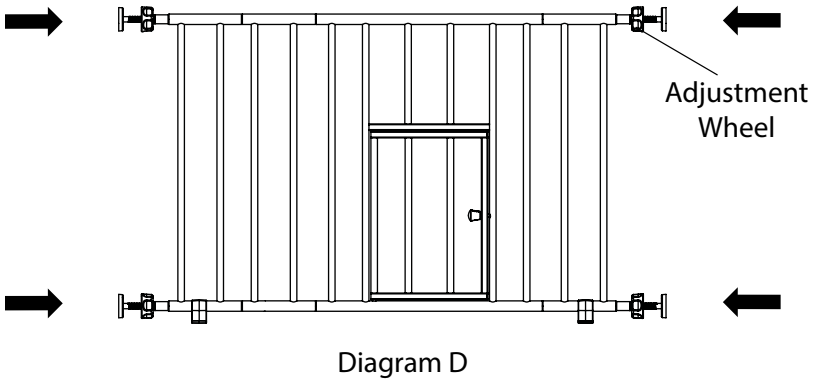
Attach the 2 foot stand to the bottom of the gate. Refer to Diagram C.



Step 4.

Insert the 4 Threaded Spindle Rods into the holes on the 4 ends of the gate. The adjustment wheel should touch the end of the frame tube as shown in Diagram D.

IMPORTANT: The ends of the gate frame are not threaded. The threaded spindle rods should slide into the end of the frame tubes without any resistance.



Step 5.

Position the gate so that it is level and centered within your doorway or opening. Rotate the adjustment wheels on the threaded spindle rods in the opposite direction as in Step 2, expanding the gap between the rubber foot and the adjustment wheel.

HINT: It may be necessary to hold the Threaded Spindle Rods or Rubber Feet while rotating the Adjustment Wheels to ensure the entire unit does not rotate.

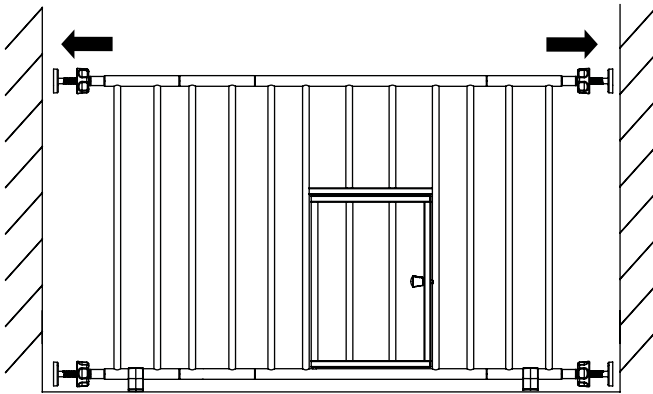


Diagram E

Expand each of the 4 Threaded Spindle Rods until they make contact with the doorway or opening. When you are satisfied with the general placement of your gate, fully tighten the Threaded Spindle Rods. Refer to Diagram E.

NOTE: There should be equal spacing among each of the 4 Threaded Spindle Rods. Make the appropriate adjustment to ensure you have installed your gate safely.

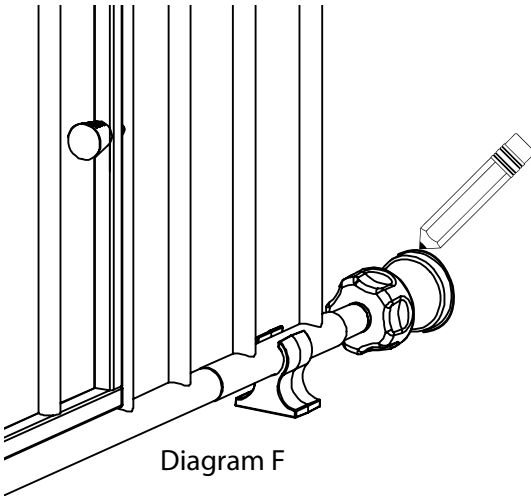
WARNING: The gap between the gate and wall should not exceed more than 2.5 inches.

Positioning and Attaching the Wall Cups

Your gate is a pressure mounted gate. Therefore, it is not necessary to use the screw attached Wall Cups in your door opening if you choose not to. However, IF YOU ARE USING THE GATE AT THE TOP OF STAIRS YOU MUST USE THE WALL CUPS. Using the Wall Cups will affix your gate more firmly in the doorway or opening.

Step 1.

After you have mounted your gate, and you are satisfied with its positioning, use a pencil or other marking tool to draw a circle on the surface of your doorway or opening around the perimeter of the 4 rubber feet.



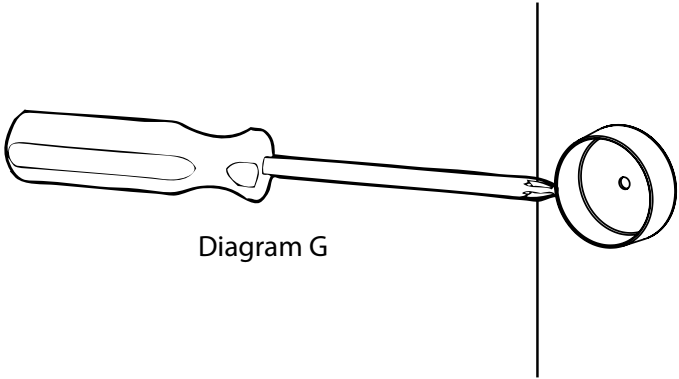
Step 2.

Next, completely remove the gate from the opening by loosening each of the 4 Threaded Spindle Rods and de-pressurizing the gate.

Step 3.

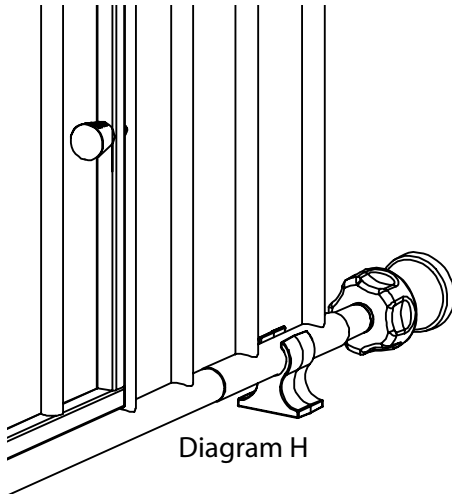
With the gate fully removed, you can now use the circles you marked during Step 1 as guides for screwing in your 4 Wall Cups.

Center each of the Wall Cups within the guide circles and use the provided self-tapping screws to fasten them in place via the hole through the center of each Wall Cup.



Step 4.

Reinstall your gate in the doorway or opening according to the instructions, using the newly installed Wall Cups as anchoring points for the 4 Threaded Spindle Rods



Replacement Parts:

Hardware Kit #14055 Includes:

- Threaded Spindle Rods w/ Adjustment Wheel (4)
- 1" Wall Mount Screws (4)
- Wall Cups (4)



Small Pet Door:

To use the small pet door, pull back on the spring pin. As shown in Diagram I.

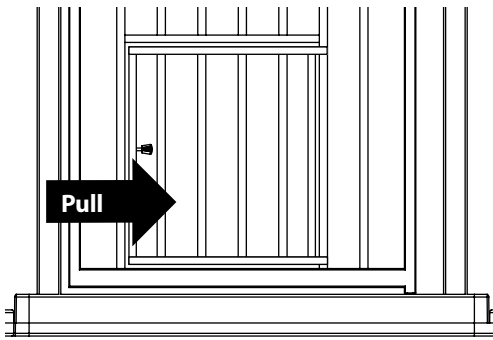


Diagram I

CARE AND MAINTENANCE

Periodically check the gate for sign of damage, wear or for missing components.

Do not use if any part is missing, worn or damaged components.

Check the gate regularly to make sure all the hardware and mountings are tightened.

Do not use abrasive cleaners or bleach.

Clean it by sponging with warm water and mild detergent.

90 Days Limited Warranty:

If, during the first 90 days after consumer purchase of this item, under reasonable and non-commercial use and conditions of maintenance, it fails while owned by the original purchaser because of materials or workmanship of finish and assembly, Carlson Pet Products Inc. will replace or repair it at their option. PROOF OF PURCHASE REQUIRED

CarlsonTM
Pet Products

Carlson Pet Products, Inc

3200 Corporate Center Drive, Suite 105

Burnsville, MN 55306, USA

Phone: 952-435-1084

20190314ET